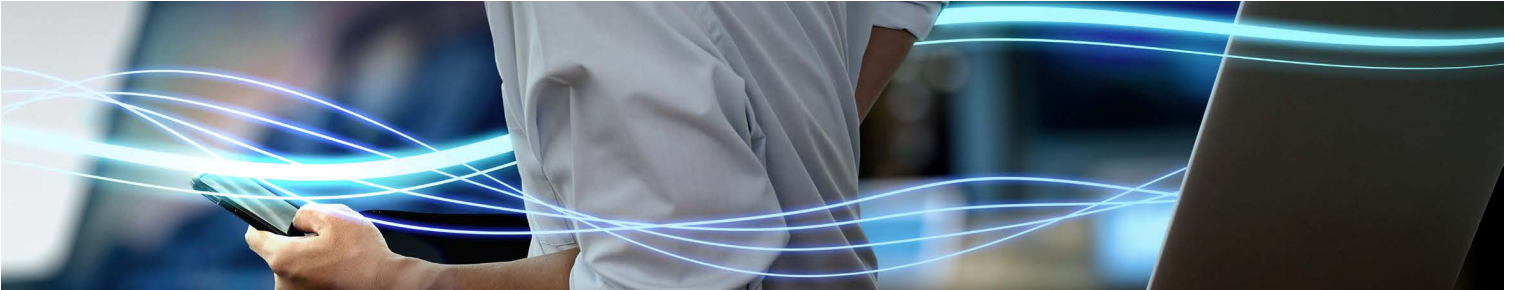


AireSpring SD-WAN

Optimize your connectivity with network-based software-defined wide area networks



An increased use of cloud applications, video and voice is driving demand for more reliable, high-performance bandwidth. Traditional WAN network solutions cannot scale as quickly, are not cost-effective, and become too complex to manage efficiently. SD-WAN technology utilizes bandwidth more efficiently and economically, lowering your costs and increasing application and network reliability and performance. AireSpring's Platinum SD-WAN package delivers a best-of-breed solution, to ensure that you get the right SD-WAN package while taking advantage of superior performance, versatility and savings.

AireSpring's Platinum SD-WAN package delivers an enhanced, fully managed, easy-to-deploy solution, including complete design engineering, dedicated project management and white-glove implementation and support from our team of technology experts. This innovative and customizable package helps companies optimize their communications networks by leveraging advanced SD-WAN features and functionality together with AireSpring's nationwide, end-to-end managed connectivity and professional services.

Our network Solutions Engineering team partners with you to determine the right sized SD-WAN package for your business. Unlike many one-size-fits-all solutions on the market today, you never pay for more than what you need. We also help ensure that your custom policies are accommodated to help reduce potential gaps in security. Each Platinum SD-WAN appliance arrives on-premises preconfigured to meet your unique specifications, eliminating the need for expert IT staff to install, configure and manage the device.

Expand Your Bandwidth

SD-WAN can enhance your internet connection by using low-cost, public broadband or internet connectivity to expand your bandwidth with active/active routing.

Enhance Performance

Elegant Failover and Failback lets you leverage session load balancing and automatic failover to avoid outages. Use the QoS engine to set application priority and slow down lower priority traffic so user congestion is reduced.

Optimize Voice Quality

SD-WAN makes it possible to deliver voice effectively over the public internet.

Simplify WAN Management

SD-WAN offers the ease, flexibility, and control of centralized configuration. Gain access to your entire WAN, see network performance, and increase network visibility with centralized WAN management.

Scale and Grow with Ease

Accommodate and respond to rapid business growth by quickly deploying new branches or connecting remote locations to your central headquarters without the longer installation times that can come with traditional WAN solutions such as MPLS.

Leverage the Power of Network-Based SD-WAN

With SD-WAN gateways installed throughout AireSpring's core network, you are able to fully mesh and interconnect your SD-WAN with a wide range of AireSpring solutions including MPLS, UCaaS, SIP Trunking and Internet.

Reduce Branch Costs

SD-WAN's centralized, cloud-based software reduces the costs of provisioning, maintenance and local network staff and simplifies branch-office networking.

Improve Enterprise IT Efficiency

A unified policy framework enables SD-WAN to orchestrate custom policies virtually across an unlimited number of branches from an intuitive, single pane of glass management control portal.

PLATINUM SD-WAN PACKAGE



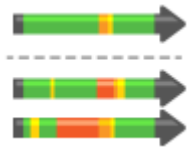
KEY FEATURES & FUNCTIONALITY	BENEFITS	OTHER VENDORS
Mix & match existing or new MPLS with your SD-WAN, and/or connect any carrier or circuit over multiple transport types (Ethernet, Fiber, Broadband, LTE, EOC, TDM and more) via AireSpring's network.	<ul style="list-style-type: none"> Mix and match over 20 different vendors with multiple access types to create the optimal solution for your enterprise. 	No one carrier can provide this level of diversity. Most only provide access to their own network.
Free Network Monitoring 24/7/365.	<ul style="list-style-type: none"> 24/7/365 real-time monitoring by the AireSpring Network Operations Center (NOC), using AireNMS. Proactive ticket initiation, management and resolution by AireSpring NOC in the event of a network alert. 	Not offered by many vendors.
Free 3rd Party Circuit Support.	<ul style="list-style-type: none"> AireSpring will proactively open repair tickets on behalf of customers for their non-AireSpring, internet-only circuits. 	Not offered by many vendors. Only available at a premium cost by the few that do.
AireSpring Platinum Professional Services: White Glove SD-WAN.	<ul style="list-style-type: none"> Includes implementation design and engineering. We will design (pre-sales), deploy (provisioning) and support (customer service/NOC) your SD-WAN solution at no additional cost. Branch deployment support via pre-configuration of SD-WAN edge boxes. 	No major vendor includes this level of pre- and post SD-WAN implementation support and service. Others charge a premium for this level of support.
Free Flex Licensing.	<ul style="list-style-type: none"> Customers are never forced to license more than what they need. AireSpring's flex pricing right-sizes SD-WAN licensing, resulting in 30%-70% lower SD-WAN costs. 	Other vendors charge for all traffic resulting in unnecessarily oversized and over-licensed SD-WAN deployments.
Free WRITE Access to SD-WAN Cloud-Based Orchestrator's "single pane of glass view."	<ul style="list-style-type: none"> Provides customers with configuration level capabilities for their SD-WAN environment at no additional cost. 	Write access is not offered by many vendors today at any price.
Free READ Access to SD-WAN Cloud-Based Orchestrator's "single pane of glass view."	<ul style="list-style-type: none"> AireSpring offers free READ access to a sophisticated SD-WAN web-based portal. Provides customers with deep monitoring visibility into their SD-WAN network at no additional cost. 	Requires additional charges.
Maximum availability with maximum WAN uplinks.	<ul style="list-style-type: none"> Up to 8 WAN uplinks available 	Not offered by many vendors.
Secure and private direct connection to most major cloud providers.	<ul style="list-style-type: none"> Connect privately and securely with full QoS to dozens of cloud providers, hundreds of datacenter providers, and thousands of SaaS providers. 	Not offered by many vendors.
Multi-vendor SD-WAN Solution.	<ul style="list-style-type: none"> Not all SD-WAN vendors are created equal. AireSpring works with multiple SD-WAN vendors and does not sell a one-size fits all solution but instead architects a best-of-breed SD-WAN solution based on customer needs and situation. 	Most vendors only offer one SD-WAN technology.
Unique AireSpring Escalation List up to CEO level.	<ul style="list-style-type: none"> We're so confident in our ability to properly design, deliver and support our solutions that the buck stops with our CEO. 	No other major carrier offers this service.

AirePBX UCaaS Licenses & Features



	AirePBX <i>Business</i>	AirePBX <i>Enterprise</i>
Inbound ACD	●	●
Multi-Line Hunt Groups	●	●
Multi Level Auto Attendant	●	●
Ring to All Devices	●	●
Re-Direct Calls to Mobile	●	●
Find Me/ Follow Me	●	●
Click to Dial	●	●
Call Back & Web Click to Call	●	●
Unified Visual Voicemail	●	●
AireSpring Online Portal	●	●
Outlook Integration	●	●
Inbound/Outbound Caller ID	●	●
HD Voice	●	●
Conference Calling	●	●
Call Forwarding	●	●
Blind/Attended Transfer	●	●
Internet Fax Number		●
Live Call Transfer Between Devices		●
Team Presence		●
Internal Office Chat		●
Video Calling		●
Hosted Soft Phone		●
Mobile & Desktop App		●

AireSpring SD-WAN Features



Dynamic Path Selection - automatic monitoring, detection and configuration of link provider & characteristics, routing & QoS settings



Smart QoS/QoE- out-of-the-box 2,500+ application identity engine allows instant prioritization, marking, rate limiting and more using the most granular traffic characteristics



Link Steering & Remediation – Wire speed per-packet link steering is possible due to extremely granular bidirectional analytics & reactive algorithms capable of mitigating packet loss, jitter, out-of-sequence packets and more while adding hypersonic hitless 2ms failover that’s entirely transparent to VOIP & stateful protocols



Application Performance Monitoring – Netflow level data at your fingertips from every site in real-time via your cloud orchestration portal. 60min to 1year views of data including per-circuit quality scores & visualizations



Cloud VPN – Automatic military grade AES encryption for full mesh site to site connectivity plus IPSEC tunnels to Cloud providers like AWS/Azure all within a single interface



Security – Integrated Palo Alto firewalls (extra license fee), AES encryption, traffic segmentation for guest Wifi, regulatory compliance, or complex routing insure layer2/layer3 separation for the most demanding networks



Virtual Network Function - On “V” series appliances utilize edge computing by running select 3rd party virtual appliances



Service Chaining – Easily chain cloud based services such as Zscaler or Websense via simple policies applied to any/all of your sites



Flexible CPE – Physical, Virtual, and Cloud appliances (AWS, Azure) available for ease of deployment



Business Policies – Implement QoS, resource allocations, link/path steering, Internet or individual application backhaul between sites, failover and much more via easy-to-use policies.



Cloud Portal – Do everything from a single pane of glass from anywhere you can access the web. Configure an individual site or all sites at once. Or just tell us what you want, we’ll do it for you.



Application Visibility – Build your own application identities or use the 2,500+ & growing application identity engine database that’s built-in. Use what you build in policies to affect QoS, pathing, failover and more.



Zero-Touch Deployment – Be up in a matter of minutes. HA options available too.

- **Direct Node to Node Connectivity for voice media**
 - Node to node tunnels setup by default
 - Voice RTP media goes directly to node not to hub then node
- **Allows you to operate AirePBX voice over broadband loops**
 - Buffers mitigate packet loss, latency and jitter
- **Multiple WAN loops support hypersonic voice failover**
 - Continuous Voice operating over multiple physical mediums
 - Fast Ethernet, GigE, 4G/LTE, Satellite
- **AireSpring VMware SD-WAN by VeloCloud™ Gateways at each COLO**
 - Geo-Redundancy to AireSpring Voice COLOs (LA and NY)
- **All WAN connections are encrypted**
 - Provide network compliance for HIPAA, PCI and etc.
- **Provide private and secure Cloud Connectivity via Multi-Cloud Connect (MCC)**
 - SD-WAN provides encrypted connections to Multi-Cloud Connect Services

- **AirePBX can now operate over broadband loops with SD-WAN**
 - Provides **low cost footprint for WAN access**
 - QoS / QoE provided by SD-WAN over a **single broadband**
 - **Symmetric Broadband** rates now available across the U.S.
 - Provides loop diversity from a carrier and speeds available POV
 - Add AireSpring Wan loop to existing 3rd party
 - **Provide 2 broadband loops via diverse carriers for redundancy & Load balancing**
 - Beginning of Disaster Recovery Plan
 - May be more cost effective than including a Fast Ethernet circuit
 - **4G LTE circuits** can be used as a 2nd circuit with SD-WAN

Broadband AirePBX UCaaS with SD-WAN

